



# BRYNMELYN PRIMARY SCHOOL

Newsletter - February 7<sup>th</sup> 2025



# OUR SCHOOL VISION

*Brynmenyn Primary School is committed to creating lifelong learners who take responsibility for themselves and their actions, showing resilience and perseverance in the face of all challenges. We strive to instil confidence, passion and ambition across the school community in order for everyone to pursue their dreams, achieve their best and realise their potential. Through kindness, respect and friendship, we support and challenge each other and celebrate the individuality and uniqueness of all learners, families, staff and communities.*



# THIS WEEK'S LEARNING

This week, year 1 have enjoyed their Feel-Good Friday. They started the day with some mindfulness and ended by painting beautiful paintings with their own hand made and natural paintbrushes.

Year 4 have also been learning in the outdoors. They have created self portrait sculptures using natural materials.

Year 5 have been exploring the cultural background of Brazilian masks in preparation for making their own head-dresses and sharing their learning with parents soon.

*Take a look at Dojo for the photos.*

# PARENTS' EVENINGS

- Thank you for attending parents' evening to receive updates about your child's progress since September.
- If you have not been able to attend, your child's teacher will be contacting you on the phone to share the updates or you can arrange to meet them in person.

# CELEBRATION NEWS

Well  
Done!

As part of the work on Tali Teithio, Miss Michael was asked to present at Y Senedd alongside Sustrans about Active Journeys. She spoke to members of the Senedd about what we have done as a school and the impact it has on physical and mental health as well as the environment.

It is wonderful that the work Miss Michael has been promoting in our school is being recognised and celebrated by the Senedd.



# CELEBRATION NEWS

Well Done!

Seren y Wythnos awards have been presented to pupils in every class recognised for their use of Welsh. Pupil of the Week awards have been shared for a range of wonderful achievements across the school this week.



This week these pupils have shared their outside of school achievements –

Alfie – for scoring tries and trying hard in rugby tots.

Sophie – yellow and black belt in kickboxing.

Caden – second place in the English Kickboxing Championship.

Elliott – scoring tries and grabbing tags to for Tondu RFC.

Isaac – Tondu RFC Player of the Match.

Louis – Go Kart racing alongside the advanced drivers.

# ATTENDANCE



Every Friday we recognise the class with the highest attendance during our celebration assembly. We are continuing to promote the BCBC message of 'Miss School, Miss Out'. Next term we will be sharing the attendance of every class each week.



**If your child is absent from school, you must inform us before 9:30am or it is recorded as unauthorised. Without this information we are obliged to contact the Education Welfare Officer.**

This week our attendance winners are the Millipedes Class, Mrs Cuss & Mr Hulme, with an excellent attendance of 98.2%.

**MISS SCHOOL MISS OUT!**

"Attending school every day is important for our learning, wellbeing, achievement, and overall development."

Research shows that missing out on just 17 days of school will cause a drop in grade across all subjects at GCSE level. The higher your school attendance rate, the higher you will achieve.

#attendtoachieve

www.bridgend.gov.uk/residents/schools-and-education/school-attendance/

BRIDGEND

# TALI TEITHIO



Every week we track how our pupils travel to school and celebrate the class with the most active journeys – on foot, by bike or scooter. We are also celebrating the positive impact that has on the environment and our mental health.

This week it was the Harriers class who had the most active journeys – 129 in total. Gwaith da Harriers!



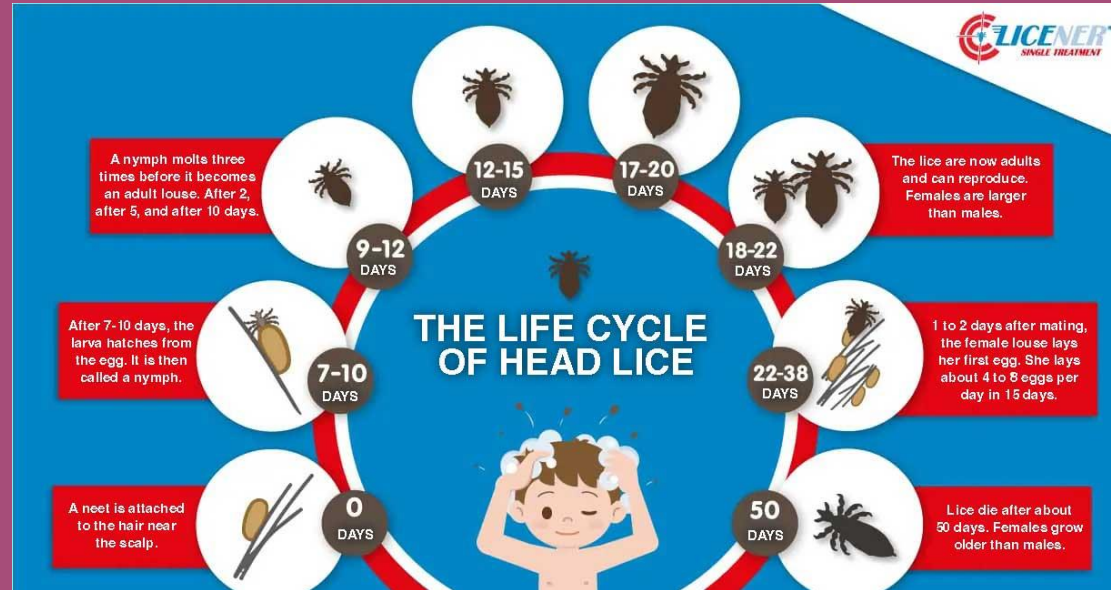
# BIKES & SCOOTERS

- We love it when pupils come to school on their scooters or bikes. It all adds to our Tali Teithio data and helps us to have appositve impact on the environment.
- Polite reminder – We do request that they are only walked on school site to avoid any collisions or accidents.



# HEADLICE

- We have had a few cases of headlice recently.
- Please can you help by checking your child's hair with a headlice comb.
- If needed, use a shampoo specifically designed to eliminate the crawly visitors.
- Advice can be found by clicking on the following link - [Head lice and nits - NHS](#)
- Pharmacies will also offer advice and guidance.
- Thank you for your support.



# STAFF CAR PARK

- **POLITE REMINDER**
- If you do not have a school permit to use one of the disabled bays, please do not enter the staff car park at any point.
- We all recognise that parking around school is difficult and request that everyone considers our resident neighbours.
- We have far too many cars accessing the staff car park currently and it is a health and safety hazard.
- AFTER SCHOOL CLUBS – **please use the drop off zone** to collect children attending after school club – school based and Simply After School child-care facility.
- We want to keep our grounds safe. This includes the car parks and how they are accessed.
- THANK YOU FOR YOUR CONTINUED SUPPORT

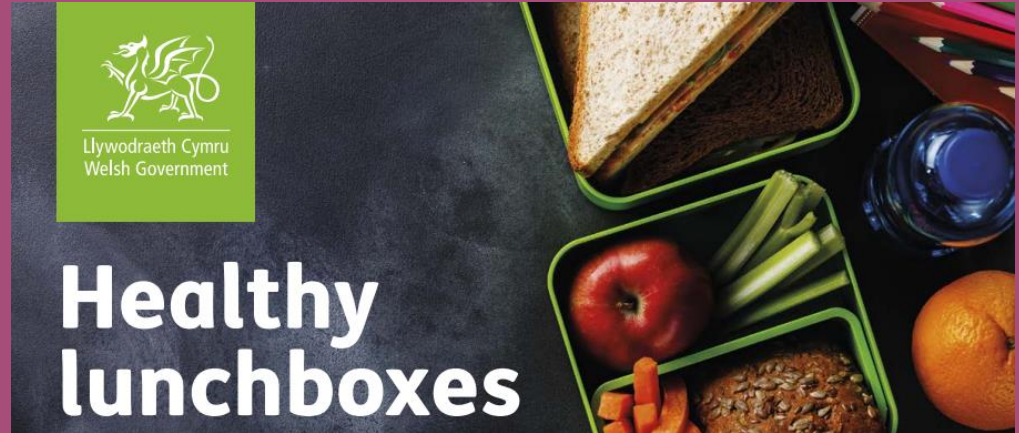


# HEALTHY LUNCHBOXES

As part of our work as a healthy school we are required to promote healthy lunchboxes.

Please click on the Welsh Government link below for advice on healthy lunchboxes.

[Healthy Lunchboxes](#)



## Top tips

You do not have to use foods produced specifically for lunchboxes. Some foods, such as meat or pasta, taste just as good cold. So how about cooking extra amounts for dinner, keeping the left overs in your fridge, then using them as part of your child's lunch to take to school the next day? You could plan lunches for the week in this way to help you to save money and reduce food waste.

To help you to find healthier options at the supermarket, look at nutrition labels on the front of packs and pick those which have amber or green traffic lights for fat, saturated fat, sugars and salt where possible.


# DATES FOR YOUR DIARY

This page will be regularly updated with new dates for events/trips/visits etc.


Keep an eye out for new dates added.

For now, we are sharing the annual dates for 2024-25.

**NEW INSET DATE ADDED**



## Brynmenyn Primary School - Academic Year 2024-25



TERM DATES		
Autumn 1	Monday 2nd September - Friday 26th October	
Half term	Monday 28th October - Friday 1st November	
Autumn 2	Monday 4th November - Friday 20th December	
Spring 1	Monday 6th January - Friday 21st February	
Half term	Monday 24th - Friday 28th February	
Spring 2	Monday 3rd March - Friday 11th April	
Easter hols	Monday 14th - Friday 25th April	
Summer 1	Monday 28th April - Friday 23rd May	
Half term	Monday 26th - Friday 30th May	
Summer 2	Monday 2nd June - Monday 21st July	

INSET DAYS		
Friday 6th Sept.	Monday 9th Sept.	Friday 25th October
Friday 21st February	Friday 23rd May	Monday 21st July

PARENTS EVENINGS	
<b>Meet &amp; Greet</b> (3pm on selected dates)	Year 2 - 11/9/24 Year 1 - 12/9/24 Year 6 - 13/9/24 Year 3 - 16/9/24 Year 4 - 17/9/24 Reception - 18/9/24 Year 5 - 19/9/24
<b>Autumn Term</b>	Tuesday 15th & Wednesday 16th October
<b>Spring Term</b>	Tuesday 4th & Wednesday 5th February

PLEASE BE AWARE THAT THESE DATES MAY BE SUBJECT TO CHANGE.  
WE WILL ALWAYS ENDEAVOUR TO GIVE AS MUCH NOTICE AS POSSIBLE FOR ANY CHANGES.

SPORTS DAY		
Option 1	Tuesday 10th June	9:30-10:30 Years 3 & 4
Option 2	Thursday 12th June	10:45 - 11:45 Years 5 & 6
Option 3	Tuesday 17th June	1:15 - 2:15 Years 1 & 2
		2:30-3:15 Nursery & Reception

NATIONAL PERSONALISED ASSESSMENTS (YEARS 2-6)	
11th - 22nd November	16th - 27th June

CHRISTMAS CONCERTS							
Nursery	Reception	Year 1	Year 2	Year 3	Year 4	Year 5	Year 6
Thurs. 12th December - 2pm	Mon. 9th December - 2pm	Tues. 10th December - 2pm	Weds 11th December - 2pm	Tues. 10th December - 10am	Weds 11th December - 10am	Friday 13th December - 10am	Thurs. 12th December - 10am

# DATES FOR YOUR DIARY

This page will be regularly updated with new dates for events/trips/visits etc.

Keep an eye out for new dates added.

For now, we are sharing the annual dates for 2024-25.

Date	Event
Monday 10th February	Safer Internet week
Monday 17th February	Welsh Culture Week
Friday 21 <sup>st</sup> February	INSET – Whole school closure
24 <sup>th</sup> -28 <sup>th</sup> February	HALF TERM WEEK

# DATES FOR YOUR DIARY

This page will be regularly updated with new dates for events/trips/visits etc.

Keep an eye out for new dates added.

For now, we are sharing the annual dates for 2024-25.

Date	Event
Monday 3rd March	Year 5 Swimming week (Falcons & Kestrels)
Monday 3 <sup>rd</sup> March	Eisteddfod
Friday 7th March	Scholastic Book Fayre
Wednesday 19 <sup>th</sup> March	Y6 World Book Quiz
24 <sup>th</sup> March – 4 <sup>th</sup> April	Big Walk & Wheel Fortnight
Thursday 3rd April	Year 4 Harry Potter trip
Wednesday 9 <sup>th</sup> April	PTFA Easter Egg Hunt
Thursday 10 <sup>th</sup> April	PTFA Easter Disco
Friday 11th April	Year 6 Cycle Proficiency
Friday 11th April	LAST DAY OF TERM
Monday 14 <sup>th</sup> - Friday 25 <sup>th</sup> April	EASTER HOLIDAY
Monday 28 <sup>th</sup> April	Summer Term

# SCHOOL MEALS

Week  
beginning  
10/2/25

*Week 3*

# PRIMARY SCHOOL MENU

## WEEK 1

### MONDAY

Cod & Salmon Fish Fingers\*  
Or Broccoli & Tomato Pasta  
Herby Diced Potatoes  
Baked Beans, Sweetcorn, Garden Peas, Salad  
Raspberry Peach Swirl Sponge & Custard

### TUESDAY

Beef Bolognaise\*  
Or Falafel Burger Pasta or Potato Wedges  
Mixed Vegetables, Broccoli, Salad  
Fruit Yoghurt or Fresh Fruit

### WEDNESDAY

Roast Turkey & Stuffing in rich Gravy\*  
Or Vegetable & Lentil Shepherds Pie  
Boiled or Creamed Potatoes  
Green Cabbage, Carrots & Diced Swede  
Jelly with Strawberry Swirl

### THURSDAY

Meatballs in Rich Gravy\*  
Or Vegetable Sausage  
Creamed or Boiled Potatoes  
Carrots, Garden Peas, Broccoli, Salad  
Fruit Yoghurt or Fresh Fruit

### FRIDAY

Fish Fillet\*  
Or Spinach and Chickpea Curry  
Vegetable Rice or Chipped Potatoes  
Mixed Vegetables, Sweetcorn, Broccoli, Salad  
Mandarin topped Sponge Slice

## WEEK 2

### MONDAY

Mini Omelette with Pork Sausage\*  
Or Sweet & Sour Vegetables  
Potato Wedges or Vegetable Rice  
Baked Beans, Garden Peas, Salad  
Eve's Sponge & Custard

### TUESDAY

Cod & Salmon Fish Fingers\*  
Or Vegetable Plant Ball in Tomato Sauce  
Pasta or Diced Potatoes/Boiled Potatoes  
Broccoli, Garden Peas, Sweetcorn, Salad  
Fruit Yoghurt or Fresh Fruit

### WEDNESDAY

Roast Pork & Apple Sauce in Rich Gravy\*  
Or Vegetable Sausage  
Creamed or Boiled Potatoes  
Green Beans, Swede & Broccoli  
Tropical Rice Pudding

### THURSDAY

Chicken Fillet in Rich Gravy\*  
Or Vegetable & Bean Casserole  
Boiled or Creamed Potatoes  
Carrots, Cabbage, Country Vegetables, Salad  
Fruit Yoghurt or Fresh Fruit

### FRIDAY

Cheese and Tomato Pizza\*  
Or Quorn Dippers  
Jacket Potato or Chipped Potatoes  
Mini Corn Cobs, Mixed Vegetables, Salad  
Fruit Muffins or Tutti Frutti Flapjacks

## WEEK 3

### MONDAY

Lemon Sole\*  
Or Mushroom and Leek Bake Jacket Potato  
or Sauté Potatoes Garden Peas, Sweetcorn,  
Broccoli, Salad Toffee Apple Brownies with  
Fruit Slices

### TUESDAY

Meatballs in Tomato Sauce\*  
Or Southern Style Vegetable Burger  
Pasta or Potato Wedges Mixed Vegetables, Garden Peas,  
Sweetcorn, Salad  
Fruit Yoghurt or Fresh Fruit

### WEDNESDAY

Roast Beef with Rich Gravy\*  
Or Garden Vegetable Pie  
Boiled or Creamed Potatoes  
Baton Carrots, Cabbage, Swede  
Artic Roll and Fruit Wedges

### THURSDAY

Pork Frikadellons\*  
Or Quorn Fillet  
Creamed Potatoes or Boiled Potatoes  
Baked Beans, Carrots, Garden Peas  
Fruit Yoghurt or Fresh Fruit

### FRIDAY

Chicken Tikka/Korma\*  
Or Vegetarian Hot Dogs  
Vegetable Rice or Chipped Potatoes  
Broccoli, Sweetcorn, Garden Peas, Salad  
Strawberry Delight Crunch



Also served daily: Fresh Fruit, Wholemeal Bread, Yoghurt, Semi-Skimmed Milk, Water.

Occasionally due to circumstances beyond our control it may be necessary to change or replace some menu items or ingredients.

Please note our menus / food may contain allergens. We are able to provide allergen information on request or please visit the Bridgend CBC website for further information.

\*NURSERY PUPILS

## WE'RE RECRUITING!



## JOIN OUR TEAM!



# QUERIES OR CONCERNS

If you have a query regarding your child in school or a concern to raise please see the chart opposite for who to speak to.

You can contact the school office on 815850 who will pass the message on to the member of staff or arrange an appointment. They will get back to you as soon as possible.

## Step 1

Discuss concerns with class teacher - allow time for it to be resolved.

## Step 2

If you are still worried - Discuss concerns with class teacher again or with Mrs Russell - allow time for it to be resolved.

## Step 3

If you are still worried - arrange a follow up meeting with Mrs Russell - allow time for it to be resolved.

## Step 4

If you are still worried - contact the office to book an appointment with Miss Jones.

# HELP & ADVICE

"What's the bravest thing  
you've ever said?" asked  
the boy.



"Help," said the horse

Below are a number of agencies that can offer help, support or advice.

- ★ Bridgend Women's Aid - 01656 766139
- ★ WCADA (Substance Abuse Charity) - 01656 667717
- ★ Childline - 0800 1111
- ★ Safer Wales - Male Domestic Abuse Charity - 0808 801 0321
- ★ Live Fear Free 24 hour telephone line - 0808 80 10 800
- ★ Citizens Advice Bureau - 01656 762800
- ★ Samaritans - 116123 or email [jo@samaritans.org](mailto:jo@samaritans.org)
- ★ Shelter Cymru (financial & home advice) - 08000 495 495
- ★ Al-Anon (Family support for alcoholism) - 0800 0086 811
- ★ Calan (Domestic Violence Charity) - 01639 633580

# GENERAL INFORMATION

## Start & End Times

*Please ensure that your child is in school on time, in readiness for the school start time.*

As a reminder the times are below -

**All classes start time 8:55 am**

(Gates open at 8:50-8:55am)

**Finishing times** Nursery - 3:15pm

Reception to Year 6 - 3:25pm

## Up-to-date Contacts

\_Please ensure we have the correct and most up-to-date emergency contact details for your child. If we are unable to contact you or any of the listed contacts, following repeated attempts, we are obliged to contact Social Services for advice.

## Notifying of Absence

If your child is unwell and absent from school, please can you contact the office before 10am on the first day of absence. You can telephone on 01656 815850 or email on [admin@brynmenynps.bridgend.cymru](mailto:admin@brynmenynps.bridgend.cymru). Please get in touch with the office rather than through Dojo as those messages might be read after 10am.

## Medicines

Please can all medicines be handed in to the office and a form completed so they can be administered safely. Without the form, we are unable to administer. All medicine needs to be in the original packaging.

# SAFEGUARDING

If you have any concerns around safeguarding, you can speak to any one of the six Designated Safeguarding Leads in school.

If you have a concern outside of school hours, you can contact the Multi Agency Support Hub on 642320.

## *Brynmenyn Primary School*

**If you have a concern regarding a pupil, you must seek advice from a Designated Safeguarding Person immediately.**

Safeguarding Governor - Mr P Deenik

MASH Duty Desk - (64)2320

### Designated Safeguarding Persons

Miss K Jones



Mrs G Russell



Mr R White



Mrs A Wilcox



Mr T Harris



Mr G Evans

