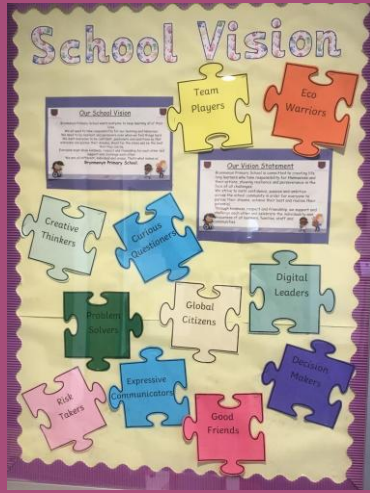




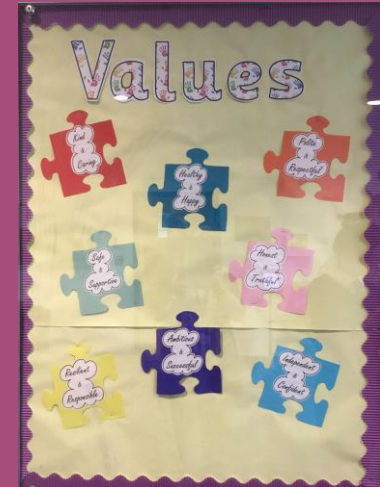
BRYNMENYN PRIMARY SCHOOL

Newsletter - January 30th 2026



OUR SCHOOL VISION

Brynmenyn Primary School is committed to creating lifelong learners who take responsibility for themselves and their actions, showing resilience and perseverance in the face of all challenges. We strive to instil confidence, passion and ambition across the school community in order for everyone to pursue their dreams, achieve their best and realise their potential. Through kindness, respect and friendship, we support and challenge each other and celebrate the individuality and uniqueness of all learners, families, staff and communities.



SOCIAL MEDIA



We would like to address an important issue that has recently been affecting pupils in school: the inappropriate use of social media outside of school hours.

Positive Role of social media (When Age Appropriate)

Social media, when used responsibly and at an age-appropriate stage, can be a positive tool. It allows children to stay connected, learn new skills, explore creative interests, and access helpful educational resources. When supervised effectively, it can support communication, collaboration, and digital literacy.

However, many social media platforms have strict age restrictions—typically 13 years and above—and younger children often do not yet have the maturity or emotional readiness to manage these online environments safely.

SOCIAL MEDIA



Impact on School Life

Unfortunately, we have seen a rise in incidents involving unkind messages, group chat disputes, and inappropriate content being shared outside of school. Although these incidents take place at home, they have a negative and detrimental effect on relationships in school. This has led to:

- Arguments and fallouts carrying over into the school day
- Emotional distress among pupils
- Disruptions to learning
- A significant amount of teacher time being spent resolving issues that originate online outside of school

SOCIAL MEDIA

We are committed to providing a calm, safe and focused learning environment, and we need your support to help ensure this continues.

Moving forward, the school will be working closely with the Police School Liaison Officer, who will be speaking to pupils in Years 5 and 6 about social media use, digital safety, and the potential risks of online behaviour. This input is aimed at educating our pupils and reinforcing the importance of staying safe and kind online.



How Parents Can Support

We kindly ask all parents and carers to take an active role in supporting their child's online safety. This includes regularly checking your child's phone, devices, and social media accounts to ensure they are being used appropriately and safely.

SOCIAL MEDIA



Below are five ways you can work with your child to encourage safe mobile phone use:

Have regular, open conversations about their online activities, who they talk to, and how they feel about their digital interactions.

Set clear boundaries and screen-time rules, including times when phones should be switched off (e.g., overnight or during homework).

Review privacy settings together to ensure that only trusted friends can view or contact them.

Monitor group chats and apps to check for inappropriate content, unkind messages, or unfamiliar contacts.

Model positive digital behaviour by demonstrating respectful online communication and balanced device use at home.

SOCIAL MEDIA

We appreciate your continued support in helping us maintain a positive and safe environment for all pupils. Working together—school, parents, and pupils—we can ensure that technology is used responsibly and in ways that enhance learning and well-being.

If you have any questions or require advice about online safety, please contact the school office.

We will be running another workshop for families in the summer term to share information about online safety and advice/guidance on supporting children with devices and safeguarding. The previous workshops have been a real success and an eye opener for all who attended. Keep an eye on Dojo for details on how to book a place.



NO E-SCOOTERS ON SITE

- We have had a number of close misses with people riding e-scooters on site.
- From this point forward, all e-scooters are not allowed on site.
- Please share this message with anyone coming to the school to drop off or collect children.
- We want to ensure the site is safe for everyone.



DRIVING AND PARKING SAFELY

POLITE REQUEST – Parking outside the school gates



We all recognise that morning drop off is a busy and often frantic time, when trying to get to work or other responsibilities. However we must all make sure that the school grounds and area around is safe for all accessing.

Please use the drop off zone carefully when accessing breakfast club. Please avoid parking on the double yellow lines outside the gate – this causes a backlog of vehicles, dangerous spots for children to cross, not to mention it is a fineable offence.

We would very much appreciate everyone working together on this so that we can make the mornings just a little less frantic and much safer for all.

Thank you for your support.

SUPPORTING SERVICE CHILDREN – BCBC LETTER

Dear parents/carers

In Bridgend County Borough Council, we are committed to the Armed Forces Covenant and we aim to support members of HM Armed Forces and their families. One aspect of the covenant is to ensure that the local authority have a knowledge of their Service children.

To improve understanding and gather a more accurate set of data of Service children, local authorities in Wales have been working with Supporting Service Children in Education Wales (SSCE Cymru). The SSCE Cymru mission is to provide the best possible educational support to Service children in Wales. They work collaboratively with organisations across the UK to build an evidence base that impacts policy and systems, and provide a suite of resources to support education professionals and Service families across Wales.

We are asking all families to complete this short survey (even if your child/children do not meet the definitions of a Service child), to help us gain an understanding of our Service community. [Click here to access the survey](#) or scan the QR code on this page.

Yours sincerely

Lindsay Iorwerth Harvey (Mr)



CELEBRATION NEWS

Well Done!

Seren y Wythnos awards have been presented to pupils in every class recognised for their use of Welsh. Pupil of the Week awards have been shared for a range of wonderful achievements across the school this week.



These pupils have shared their outside of school achievements -

- James, Year 5 - Swimming Wave 6
- Jenson, Year 6 - Rugby player of the week

Last week -

- Harry Year 1 - Rugby player of the week
- Oliver Year 3, Player of the week and swimming wave 3
- Jacob Year 3, Swansea Football academy
- Elara-Rae Year 4, Dancing presentation
- Sophia Year 4, Dancing presentation
- Bethan Year 5, Football player of the week
- James Year 5, swimming for charity



ATTENDANCE



Every Friday we recognise the class with the highest attendance during our celebration assembly. We are continuing to promote the BCBC message of 'Miss School, Miss Out'. Next term we will be sharing the attendance of every class each week.

If your child is absent from school, you must inform us before 9:30am or it is recorded as unauthorised. Without this information we are obliged to contact the Education Welfare Officer.



This week our attendance winners are the Mrs Pope, Mrs O'Brien & Ladybirds with great attendance of 97.2%

MISS SCHOOL MISS OUT!

"Attending school every day is important for our learning, wellbeing, achievement, and overall development"

Research shows that missing out on just 17 days of school will cause a drop in grade across all subjects at GCSE level. The higher your school attendance rate, the higher you will achieve.

#attendtoachieve

www.bridgend.gov.uk/residents/schools-and-education/school-attendance/

BRIDGEND

ATTENDANCE



Every Friday we recognise the class with the highest attendance during our celebration assembly. We are continuing to promote the BCBC message of 'Miss School, Miss Out'. Next term we will be sharing the attendance of every class each week.

If your child is absent from school, you must inform us before 9:30am or it is recorded as unauthorised. Without this information we are obliged to contact the Education Welfare Officer.

Last week our attendance winners are the Mr Hussey and Harriers Class with great attendance of 96.9%

The poster is titled 'MISS SCHOOL MISS OUT!' in large, bold letters. It features several photos of students with captions: 'Attend to achieve!', 'Make every day count!', and 'Miss school, miss out!'. A quote states: 'Attending school every day is important for our learning, wellbeing, achievement, and overall development.' Below this, it says: 'Research shows that missing out on just 17 days of school will cause a drop in grade across all subjects at GCSE level. The higher your school attendance rate, the higher you will achieve.' The hashtag #attendtoachieve is present. A QR code is located at the bottom left. At the bottom right is the Bridgend Council logo with the text 'www.bridgend.gov.uk/residents/schools-and-education/school-attendance/'.

SEREN Y WYTHNOS & STARS OF THE WEEK



SPRING TERM TOPICS



- Nursery – Puddles & Rainbows
- Reception – Carnival of the Animals
- Year 1 – Mix it Up!
- Year 2 – Into the Imaginarium
- Year 3 – Urban Pioneers
- Year 4 – Lights, Camera, Action
- Year 5 – Viva Brynmenyn
- Year 6 – Trail Blazers & Barrier Breakers



SCHOOL UNIFORM – FULL TO THE BRIM!

- Thank you so much for all the donations of school uniform. We are now bursting at the seams! We cannot accept any more donations at present.
- If you want or need any uniform for your child, please contact the school office and they will gather some together for you.



THE NEW YEAR 2025-26 - DATES

- Please see the dates for 2025-26.
- Although we do our very best to stick to these dates, they are subject to change when things are out of our control.
- There is one more INSET dates still to be allocated.

Brynmenyn Primary School - Academic Year 2025-26							
TERM DATES							
Autumn 1	Monday 1st September - Friday 24th October						
Half term	Monday 27th October - Friday 31st October						
Autumn 2	Monday 3rd November - Friday 19th December						
Spring 1	Monday 5th January - Friday 13th February						
Half term	Monday 16th - Friday 20th February						
Spring 2	Monday 23rd February - Friday 27th March						
Easter hols	Monday 30th March - Friday 10th April						
Summer 1	Monday 13th April - Friday 22nd May						
Half term	Monday 25th - Friday 29th May						
Summer 2	Monday 1st June - Monday 20th July						
INSET DAYS							
Monday 1st Sept.	Monday 5th January	Friday 24th October					
Monday 23rd February	TBC	Monday 20th July					
PARENTS EVENINGS							
Meet & Greet (3pm on selected dates)	Year 2	10/9/25					
	Year 1	11/9/25					
	Year 6	12/9/25					
	Year 3	15/9/25					
	Year 4	16/9/25					
	Reception	17/9/25					
	Year 5	18/9/25					
Autumn Term	Tuesday 14th & Wednesday 15th October						
Booking form will be sent out							
Spring Term	Tuesday 3rd & Wednesday 4th February						
Booking form will be sent out							
SPORTS DAY							
<i>All classes on the same day</i>							
Option 1	Wednesday 6th May	9:30-10:30 Years 3 & 4					
Option 2	Thursday 7th May	10:45 - 11:45 Years 5 & 6					
Option 3	Tuesday 8th May	1:15 - 2:15 Years 1 & 2					
		2:30-3:15 Nursery & Reception					
NATIONAL PERSONALISED ASSESSMENTS (YEARS 2-6)							
10th - 21st November				11th - 22nd May			
CHRISTMAS CONCERTS							
Nursery	Reception	Year 1	Year 2	Year 3	Year 4	Year 5	Year 6
Thurs. 11th December - 2pm	Mon. 8th December - 2pm	Tues. 9th December - 2pm	Weds 10th December - 2pm	Tues. 9th December - 10am	Weds 10th December - 10am	Friday 12th December - 10am	Thurs. 11th December - 10am

PLEASE BE AWARE THAT THESE DATES MAY BE SUBJECT TO CHANGE. WE WILL ALWAYS ENDEAVOUR TO GIVE AS MUCH NOTICE AS POSSIBLE FOR ANY CHANGES.



NO TOYS/TRINKETS/CUDDLIES/PLUSHIES



- We have had a large increase in toys/cuddlies being brought to school.
- When toys/trinkets are brought in to school they become a distraction. Either distracting children from their work or causing an argument between friends.
- Please support us by reminding your child that toys/trinkets are not to be brought to school and are best left at home where they are safe.

CONSIDERATE PARKING



- We all know how busy drop off and pick up times can be. We can also imagine how that would impact on our neighbours and local residents.
- When parking nearby to drop off or pick up, we request that consideration is made for our local residents.
- Please avoid parking on other people's driveways or parking spaces.
- Ty Ynysawdre must not be used as it impacts on emergency vehicles getting access. This is essential to keep the residents safe.

ONGOING ATTENDANCE

- As part of our monitoring systems, we track attendance regularly. The table opposite shows you the weekly attendance of your child's class and the ongoing attendance since September, in alphabetical order.
- You can also see the totals for all classes on a weekly basis and since the start of the term.
- We really need your support to get our attendance up to where it needs to be – 94% and above.

CLASS	WEEKLY	SINCE SEPTEMBER
Ants	85.5	90.7
Bees	83.5	87.2
Caterpillars	86.5	88.8
Butterflies	81.8	89.5
Ladybirds	97.2	96.3
Dragonflies	91.2	93.4
Centipedes	88.0	90.0
Millipedes	93.0	94.3
Owls	90.9	89.4
Hedgehogs	89.9	90.6
Bats	92.7	87.9
Kestrels	95.7	90.1
Harriers	92.0	90.2
Hawks	92.2	89.7
Foxes	94.8	89.4
Falcons	95.4	93.2
School total	90.8	90.6

DATES FOR YOUR DIARY – SPRING TERM 2026

This page will be regularly updated with new dates for events/trips/visits etc.

Keep an eye out for new dates added.

For now, we are sharing the annual dates for 2025-26.

Date2	Event
30/1/26	Year 6 – Bouncing Back Workshop
03/02/26	Nursery – Messy Play
3 & 4/2/26	Parents Evening
4/2/26	Year 1 – Amelia Trust Farm
12/2/26	Cygnet Training – session 1
13/2/26	HALF TERM
23/2/26	INSET Day – Staff Training
24/2/26 (Tuesday)	Spring Term 2 – Pupils return to school
27/02/26	Year 5 - Samba

DATES FOR YOUR DIARY – SPRING TERM 2026 - MARCH

This page will be regularly updated with new dates for events/trips/visits etc.

Keep an eye out for new dates added.

For now, we are sharing the annual dates for 2025-26.

Date	Event
2/3/26	School Eisteddfod
6/3/26-11/3/26	Scholastic Book Fayre
6/3/26	Y6 CCYD French Teacher
09/03/26	Year 5 - Samba
16/03/26	Year 5 - Samba
23/03/26	Year 5 – Samba
24/03/26	Year 4 – Harry Potter
25/03/26	Year 5 – BBC studio tour
26/03/26	Easter Disco
27/3/26	End of Term – EASTER HOLIDAYS

SCHOOL MEALS

Week
beginning
02/02/26

Week 2

PRIMARY MENU

WEEK 1

MONDAY

Cod & Salmon Fish Fingers *
Or Broccoli & Tomato Pasta
Herby Diced Potatoes
Baked Beans, Sweetcorn, Garden Peas, Salad
Raspberry Peach Swirl Sponge & Custard

TUESDAY

Beef Bolognaise *
Or Falafel Burger
Pasta or Potato Wedges
Mixed Vegetables, Broccoli, Salad
Fruit Yoghurt or Fresh Fruit

WEDNESDAY

Roast Turkey & Stuffing in rich Gravy *
Or Vegetable & Lentil Shepherds Pie
Boiled or Creamed Potatoes
Green Cabbage, Carrots & Diced Swede
Jelly with Strawberry Swirl

THURSDAY

Meatballs in Rich Gravy *
Or Vegetable Sausage
Creamed or Boiled Potatoes
Carrots, Garden Peas, Broccoli, Salad
Fruit Yoghurt or Fresh Fruit

FRIDAY

Fish Fillet *
Or Spinach and Chickpea Curry
Vegetable Rice or Chipped Potatoes
Mixed Vegetables, Sweetcorn, Broccoli, Salad
Mandarin topped Sponge Slice

WEEK 2

MONDAY

Mini Omelette with Pork Sausage *
Or Sweet & Sour Vegetables
Potato Wedges or Vegetable Rice
Baked Beans, Garden Peas, Salad
Eve's Sponge & Custard

TUESDAY

Cod & Salmon Fish Fingers *
Or Vegetable Plant Ball in Tomato Sauce
Pasta or Diced Potatoes/Boiled Potatoes
Broccoli, Garden Peas, Sweetcorn, Salad
Fruit Yoghurt or Fresh Fruit

WEDNESDAY

Roast Pork & Apple Sauce in Rich Gravy *
Or Vegetable Sausage
Creamed or Boiled Potatoes
Green Beans, Swede & Broccoli
Tropical Rice Pudding

THURSDAY

Chicken Fillet in Rich Gravy *
Or Vegetable & Bean Casserole
Boiled or Creamed Potatoes
Carrots, Cabbage, Country Vegetables, Salad
Fruit Yoghurt or Fresh Fruit

FRIDAY

Cheese and Tomato Pizza *
Or Quorn Dippers
Jacket Potato or Chipped Potatoes
Mini Corn Cobs, Mixed Vegetables, Salad
Fruit Muffins or Tutti Frutti Flapjacks

WEEK 3

MONDAY

Breaded Fish Goujons *
Or Mushroom and Leek Bake
Jacket Potato or Sauté Potatoes
Garden Peas, Sweetcorn, Broccoli, Salad
Toffee Apple Brownies with Fruit Slices

TUESDAY

Meatballs in Tomato Sauce *
Or Southern Style Vegetable Burger
Pasta or Potato Wedges
Mixed Vegetables, Garden Peas, Sweetcorn, Salad
Fruit Yoghurt or Fresh Fruit

WEDNESDAY

Roast Beef with Rich Gravy *
Or Garden Vegetable Pie
Boiled or Creamed Potatoes
Baton Carrots, Cabbage, Swede
Artic Roll and Fruit Wedges

THURSDAY

Pork Frikadellons *
Or Quorn Fillet
Creamed Potatoes or Boiled Potatoes
Baked Beans, Carrots, Garden Peas
Fruit Yoghurt or Fresh Fruit

FRIDAY

Chicken Tikka/Korma *
Or Vegetarian Hot Dogs
Vegetable Rice or Chipped Potatoes
Broccoli, Sweetcorn, Garden Peas, Salad
Strawberry Delight Crunch

Also served daily:
Fresh Fruit, Wholemeal Bread, Yoghurt, Semi-Skimmed Milk, Water
Occasionally due to circumstances beyond our control it may be necessary
to change or replace some menu items or ingredients.
Please note our menus/food may contain allergens. We are able to provide allergen
information on request or please visit the Bridgend CBC website for more information.
* NURSERY PUPILS

LATENESS

- We have had an increase in pupils arriving late for school. This directly affects their attendance and impacts on the start of their day.
- Our school day starts at 8:55am. That means children should be in school before this time.
- Gates will be open between 8:45–8:55am and closed promptly. After 8:55am you will need to bring your child to the office and sign them in on the iPad.
- If pupils arrive after 9:05am it gets recorded as a late. If they arrive after 9:25am it is recorded as a ‘U’ code which is late after close of register and impacts further on their attendance.



PUNCTUALITY

Getting Your Child to School Really Matters

Did You Know... ?

In a School Year, If Your Child is Late Every Day By...	Your Child Would Have Lost Approximately...	or They Would Have Missed Approximately...
5 Minutes	3.5 Days from School	20 Lessons
10 Minutes	7 Days from School	41 Lessons
15 Minutes	10 Days from School	55 Lessons
20 Minutes	14.5 Days from School	82 Lessons
30 Minutes	22 Days from School	123 Lessons

Please Encourage Punctuality to Maintain Attendance



The school day starts at 8.55 am. The class registers are open until 9.05 am. If a pupil arrives in class after this time, a “Late” mark will be recorded (L). If a pupil arrives after 9.25 am, a “Late after register closes” mark will be given (U). This affects the pupil’s overall attendance and will cause a decrease in their attendance figure.

Any learner who enters the school late will report to the school office where **parents are requested to sign in using the iPad system**. The office will record their name appropriately via SIMS. This will be reviewed with the EWO on their visits.

ATTENDANCE CODES

- / or \ – present
- L – Late (after 9:05)
- U – Late after register closed (after 9:25)
- V – trip or visit
- I – illness (school have been informed)
- M – Medical
- H – authorised holiday
- G – unauthorised holiday

SITE SECURITY - SAFEGUARDING

- If you are waiting in the foyer of the building – by the school office – please DO NOT press the green door release button and let anyone into the building. This is to be done by school staff only. This is in place for safeguarding reasons.
- There is a sign above to remind everyone.
- Thank you for your support



FRUIT TUCK - REMINDER

- All fruit tuck will need to be paid for in advance, either on a weekly or half termly basis. We will not be able to give out fruit that has not been paid for. Weekly cost = £1.50
- **Up until the end of this term = £10.50 (7 weeks up until Easter)**
- Money will need to be sent in an envelope, clearly labelled with your child's name and class/teacher.
- Pupils are still welcome to bring in their own fruit/vegetable snack for playtime.



BIKES & SCOOTERS

- We love it when pupils come to school on their scooters or bikes. It all adds to our Tali Teithio data and helps us to have a positive impact on the environment.
- Polite reminder – We do request that they are only walked on school site to avoid any collisions or accidents.



IN THE KNOW

- As parents, we all want to make sure our children are safe online.
- There is a range of information available to support families on Hwb. Click the link below for guidance about a range of apps.
- [In the know - Hwb](#)



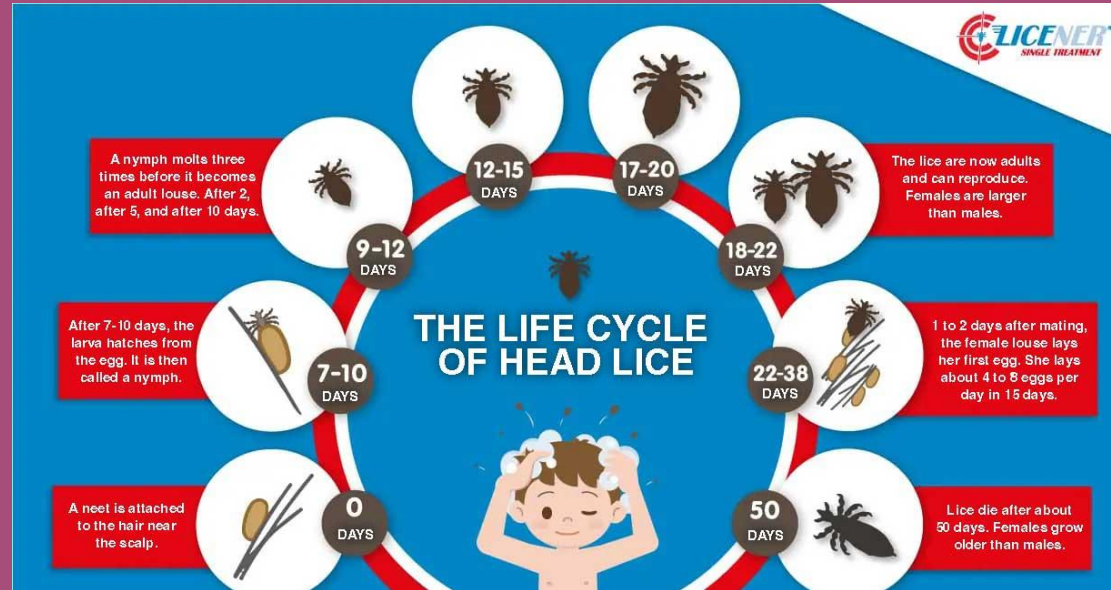
EDULINK INFORMATION

- With Edulink, you will be able to report absences, check school clubs and when the time comes - book parents evening. If you have not yet received a log in, please send us an email on admin@brynmenynps.bridgend.cymru so we can get it over to you.



HEADLICE

- We have had a few cases of headlice recently.
- Please can you help by checking your child's hair with a headlice comb.
- If needed, use a shampoo specifically designed to eliminate the crawly visitors.
- Advice can be found by clicking on the following link - [Head lice and nits - NHS](#)
- Pharmacies will also offer advice and guidance.
- Thank you for your support.



STAFF CAR PARK

- **POLITE REMINDER**
- If you do not have a school permit to use one of the disabled bays, please do not enter the staff car park at any point.
- We all recognise that parking around school is difficult and request that everyone considers our resident neighbours.
- We have far too many cars accessing the staff car park currently and it is a health and safety hazard.
- AFTER SCHOOL CLUBS – **please use the drop off zone** to collect children attending after school club – school based and Simply After School child-care facility.
- We want to keep our grounds safe. This includes the car parks and how they are accessed.
- THANK YOU FOR YOUR CONTINUED SUPPORT

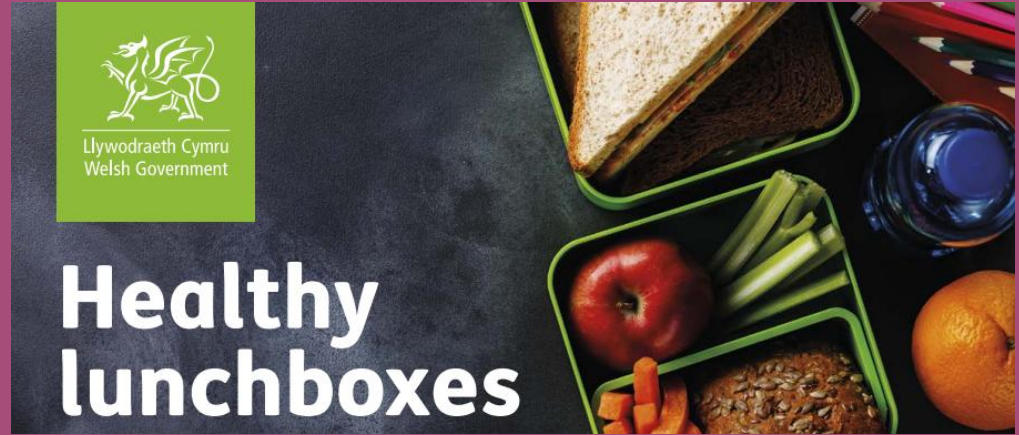


HEALTHY LUNCHBOXES

As part of our work as a healthy school we are required to promote healthy lunchboxes.

Please click on the Welsh Government link below for advice on healthy lunchboxes.

[Healthy Lunchboxes](#)



Top tips

You do not have to use foods produced specifically for lunchboxes. Some foods, such as meat or pasta, taste just as good cold. So how about cooking extra amounts for dinner, keeping the left overs in your fridge, then using them as part of your child's lunch to take to school the next day? You could plan lunches for the week in this way to help you to save money and reduce food waste.

To help you to find healthier options at the supermarket, look at nutrition labels on the front of packs and pick those which have amber or green traffic lights for fat, saturated fat, sugars and salt where possible.

QUERIES OR CONCERNS

If you have a query regarding your child in school or a concern to raise please see the chart opposite for who to speak to.

You can contact the school office on 815850 who will pass the message on to the member of staff or arrange an appointment. They will get back to you as soon as possible.

Step 1

Discuss concerns with class teacher - allow time for it to be resolved.

Step 2

If you are still worried - Discuss concerns with class teacher again or with Mrs Russell - allow time for it to be resolved.

Step 3

If you are still worried - arrange a follow up meeting with Mrs Russell - allow time for it to be resolved.

Step 4

If you are still worried - contact the office to book an appointment with Miss Jones.

HELP & ADVICE

"What's the bravest thing
you've ever said?" asked
the boy.



"Help," said the horse

Below are a number of agencies that can offer help, support or advice.

- ★ Bridgend Women's Aid - 01656 766139
- ★ WCADA (Substance Abuse Charity) - 01656 667717
- ★ Childline - 0800 1111
- ★ Safer Wales - Male Domestic Abuse Charity - 0808 801 0321
- ★ Live Fear Free 24 hour telephone line - 0808 80 10 800
- ★ Citizens Advice Bureau - 01656 762800
- ★ Samaritans - 116123 or email jo@samaritans.org
- ★ Shelter Cymru (financial & home advice) - 08000 495 495
- ★ Al-Anon (Family support for alcoholism) - 0800 0086 811
- ★ Calan (Domestic Violence Charity) - 01639 633580

GENERAL INFORMATION

Start & End Times

Please ensure that your child is in school on time, in readiness for the school start time.

As a reminder the times are below -

All classes start time 8:55 am

(Gates open at 8:50-8:55am)

Finishing times Nursery - 3:15pm

Reception to Year 6 - 3:25pm

Up-to-date Contacts

Please ensure we have the correct and most up-to-date emergency contact details for your child. If we are unable to contact you or any of the listed contacts, following repeated attempts, we are obliged to contact Social Services for advice.

Notifying of Absence

If your child is unwell and absent from school, please can you contact the office before 10am on the first day of absence.

You can telephone on 01656 815850, use Edulink or email on admin@brynmenynps.bridgend.cymru. Please get in touch with the office rather than through Dojo as those messages might be read after 10am.

Medicines

Please can all medicines be handed in to the office and a form completed so they can be administered safely. Without the form, we are unable to administer. All medicine needs to be in the original packaging.

SAFEGUARDING

If you have any concerns around safeguarding, you can speak to any one of the six Designated Safeguarding Leads in school.

If you have a concern outside of school hours, you can contact the Multi Agency Support Hub on 642320.

Brynmenyn Primary School

If you have a concern regarding a pupil, you must seek advice from a Designated Safeguarding Person immediately.

Safeguarding Governor - Mr P Deenik

MASH Duty Desk - (64)2320

Designated Safeguarding Persons

Miss K Jones



Mrs G Russell



Mr R White



Mrs A Wilcox



Mr T Harris



Mr G Evans



SAFEGUARDING

- If you are concerned about any child please come and speak with anyone of our names designated safeguarding leads on the poster on the previous page or ring on 01656 815850.
- If you feel a child is at risk of immediate harm or danger, ring:
 - MASH – 01656 642320
 - Out of Hours Emergency – 01443 743665
- Click the link below or click on the image for further information – [Multi-Agency Safeguarding Hub \(MASH\)](#)



- If a child makes an allegation of a child protection nature or staff have serious safeguarding concerns we have a legal duty to report it. There is a process which we have to follow and although this may be upsetting for all involved, the process is there to protect all children and/or adults.
- Once a referral has been made it may result in a strategy meeting between multi-agency professionals (STRAT meeting). Depending on the nature of the concerns the outcomes of the strategy meeting could result in involvement by:
 - Children's Services
 - Police
 - Early Help
 - Other support services
- If you or someone you know is struggling please let us know. We are here to help and support you.